

Models

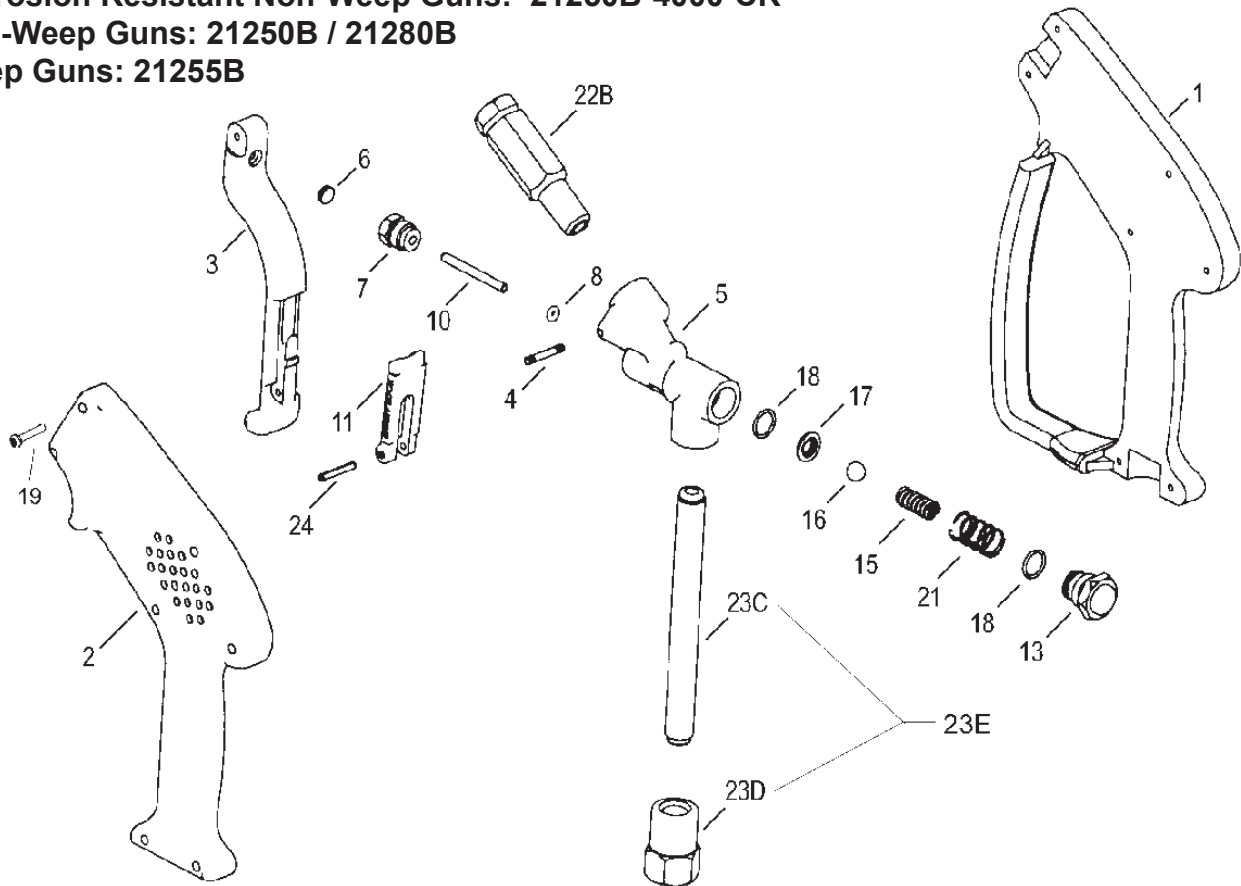
Shut-Off Guns

21250B Series, 21255B, 21280B

Corrosion Resistant Non-Weep Guns: 21250B-4000-CR

Non-Weep Guns: 21250B / 21280B

Weep Guns: 21255B



| Item # | Part # | Description | Qty | Item # | Part # | Description | Qty |
|--------|----------------------|--------------------------------|-----|--------|----------------------|---|-----|
| 1 | 21271B | Housing, Right Half | 1 | *21 | 21251 | Spring | 1 |
| 2 | 21272B | Housing, Left Half | 1 | 22B | 21256A | Discharge Tube/Fitting Assy. | 1 |
| 3 | 21273** | Trigger, 21250B, 21280 | 1 | 23C | 21331 ⁺ | Inlet Tube | 1 |
| 3 | 21012 [†] | Trigger, 21255B | 1 | 23D | 21244 ⁺ | Inlet Fitting | 1 |
| 4 | 21214 | Pin | 1 | 23E | 21257 | Inlet Tube Assembly (21250B, 21255B, 21280B) | 1 |
| 5 | 21430 | Valve Body | 1 | 23E | 21257-4000 | Inlet Tube Assembly, 303 S.S. (21250B-4000 CR only) | 1 |
| 6 | 21213** [†] | Cam, Trigger | 1 | 24 | 21236** [†] | Lock Pin | 1 |
| 7 | 21211 | Guide Sleeve | 1 | | | | |
| 8 | 21210 | O-ring | 1 | | | | |
| 10 | 21209 | Control Bolt | 1 | | | | |
| 11 | 21274** | Lock, 21250B, 21280 | 1 | | | | |
| 11 | 21013 [†] | Lock, 21255B | 1 | | | | |
| 13 | 21432 | Cap | 1 | | | | |
| 15 | 21431 | Valve Spring | 1 | | | | |
| 16 | 21205 | Valve Ball, 21250B, 21255B | 1 | | | | |
| 16 | 21357 | Valve Ball, 21250B - 4000 - CR | 1 | | | | |
| 16 | 21812 | Valve Ball, 21280 | 1 | | | | |
| 17 | 21218 | Valve Seat, 21250B, 21280 | 1 | | | | |
| 17 | 21237 | Valve Seat, 21255B | 1 | | | | |
| 18 | 21217 | O-ring | 2 | | | | |
| 19 | 21254 | Self Tapping Screw | 7 | | | | |

⁺ Sold as an assembly (23E) - part number 21001
^{**}Sold as an assembly - part number 21001
[†]Sold as an assembly - part number 21001B

Kits
(all kits include items 8, 10, 15-18 and 21)

Kit # 21227:.....21250B
Kit # 21227-CR:21250B-4000-CR
Kit # 21240:.....21255B
Kit # 21289:.....21280B

INSTALLATION & OPERATING INSTRUCTIONS

OPERATING CONDITIONS

| | (U.S.) | (Metric) |
|---------------------------|----------|--------------|
| Max Flow: | 10 GPM | (37.8 l/min) |
| Max Pressure: | | |
| 21250B, 21255B | 5000 PSI | (345 bar) |
| 21280B | 1500 PSI | (103 bar) |
| Max Temp: | 300° F | (149° C) |
| Inlet Port: | | 3/8" FNPT |
| Outlet Port: | | 1/4" FNPT |

DISASSEMBLY OF THE 21200 SERIES

- 1) Remove the seven self tapping screws (item #19) that secure the two halves of the housing together. Remove housings (items #1 and #2).
- 2) Drive out hinge pin (item #4) and remove trigger (item #3).
- 3) Remove the cap (item #13), springs (items #21 and #15), and ball (item #16).
- 4) Remove the guide sleeve (item #7), control bolt (item #10) and o-ring (item #8). Replace o-ring.
- 5) With a small dowel rod, drive-out the seats (#5) & o-ring (#18) from the guide sleeve part. Replace with new seat & o-ring.
- 6) Assemble in reverse order.

WARNING: DO NOT USE ACID CONCENTRATES THROUGH GUN

WARNING: NEVER SECURE THE SHUT-OFF GUN IN AN OPEN POSITION (TRIGGER PULLED BACK) BY MEANS OTHER THAN THE OPERATOR'S HAND, ETC. BODILY HARM MAY OCCUR IF THE OPERATOR LOSES CONTROL OF THE SHUT-OFF GUN.

CAUTION: ALWAYS ENGAGE TRIGGER LOCKING MECHANISM (ITEM #11) WHEN NOT IN USE.

GIANT

Performance Under Pressure
Giant Industries, Inc.

900 N. Westwood Ave., P.O. Box 3187, Toledo, Ohio 43607

419-531-4600 Fax: 419-531-6836

www.giantpumps.com

© Copyright 2014 Giant Industries, Inc.

08/14 21250B.INDD